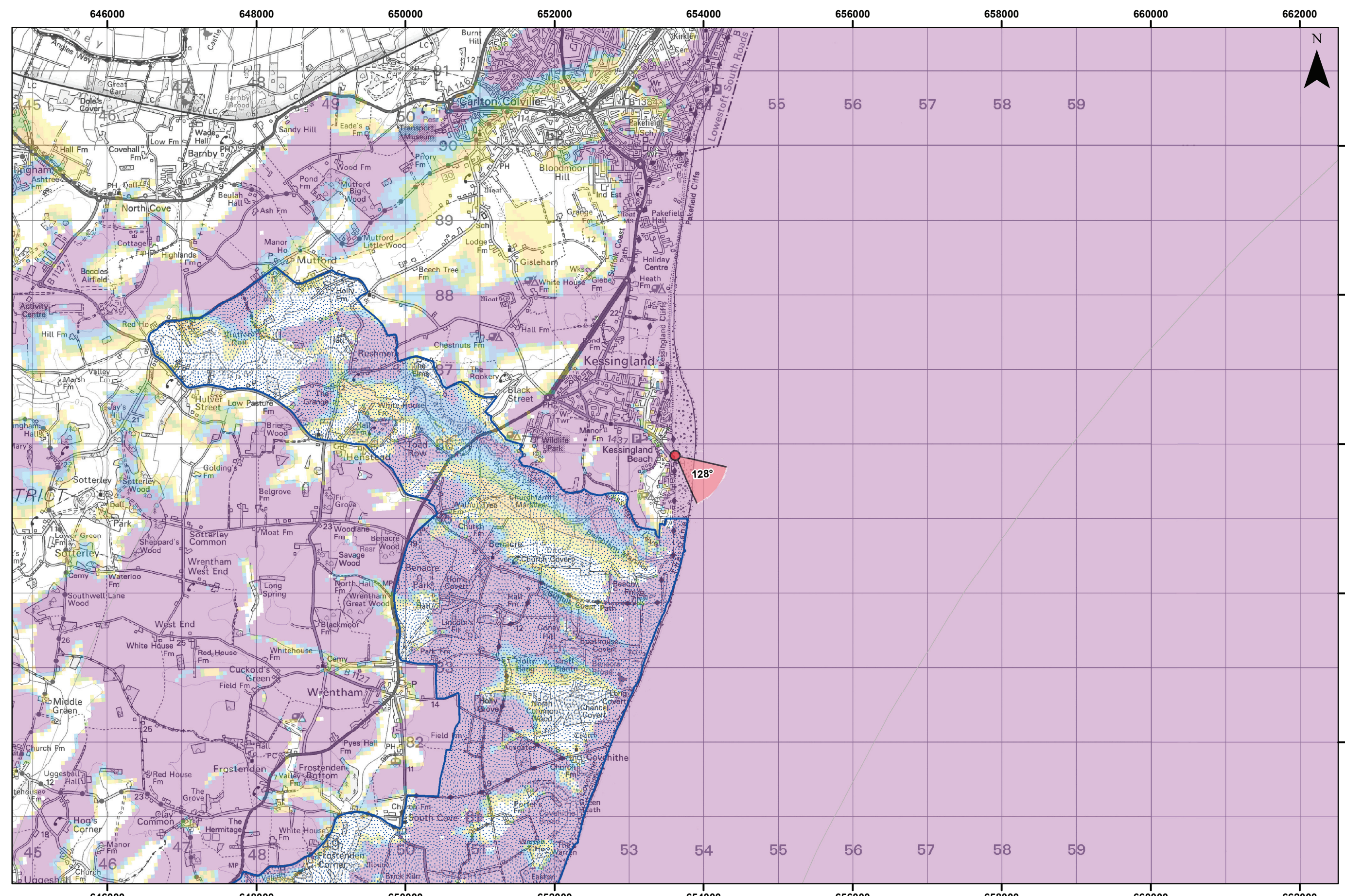


Viewpoint Location Plan - 90 Degree View
Scale: 1:350,000



Viewpoint Location Plan - 53.5 Degree View
Scale: 1:50,000



- Legend**
- Site Boundary
 - Proposed Cable Corridor
 - East Anglia TWO 300m Wind Turbine Layout
 - Indicative Accommodation Platform
 - Indicative Offshore Substation Platform (OSS)
 - 10km Radii
 - 50km SLVIA Study
 - County Boundary
 - District Boundary
 - Suffolk Coast & Heaths AONB
- Cumulative Wind Energy Development:**
- Cumulative Turbine
 - Active/In Operation
 - Pre-planning
- Blade Tip ZTV**
- No. of Blade Tips Theoretically Visible**
- 1 - 10
 - 11 - 20
 - 21 - 30
 - 31 - 40
 - 41 - 50
 - 51 - 60
- ▼ 90° Field of View
 - ▼ 53.5° Field of View

Rev	Date	By	Comment	Approved:
3	30/08/2019	LA	Second issue	
2	13/08/2019	LA	Second issue	Prepared: TH
1	14/05/2019	TH	First issue	Checked: SM
				Approved: LT

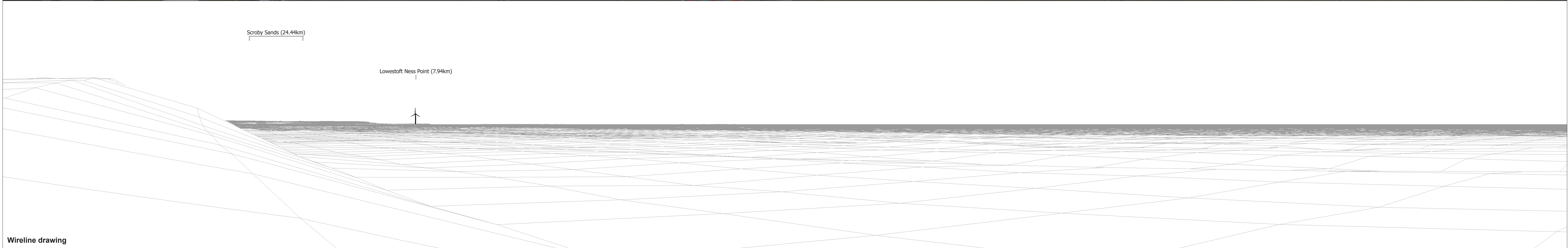
Source: © Crown copyright and database rights 2018. Ordnance Survey 100031873. The Crown Estate © Crown Copyright (2018).
© Natural England copyright. Contains Ordnance Survey data © Crown copyright and database right 2019.
This map has been produced to the latest known information at the time of issue, and has been produced for your information only.
Please consult with the SPiR Creative GIS team to ensure the content is still current before using the information contained on this map.
To the fullest extent permitted by law, we accept no responsibility or liability (whether in contract, tort (including negligence) or otherwise) in respect of any errors or omissions in the information contained in the map and shall not be liable for any loss, damage or expense caused by such errors or omissions.
ZTV: Created using ©2018 ArcGIS 10.8 software and the following data and parameters:
Blade to height: 300m
DTM Data: OS Terrain 50
DTM Resolution: 50m
Observer height: 2m
No surface features, such as buildings or trees, were included in the analysis.
Each structure and light refraction has been included in calculations.

East Anglia TWO		Drg No	EA2-DWF-ENV-REP-IBR-000920
Viewpoint: 2		Rev	3
Kessingland Beach		Date	30/08/19
		Figure	28.26a
		Datum:	WGS 1984
		Projection:	Zone 31N



Existing photograph

This image provides landscape and visual context only



Wireline drawing

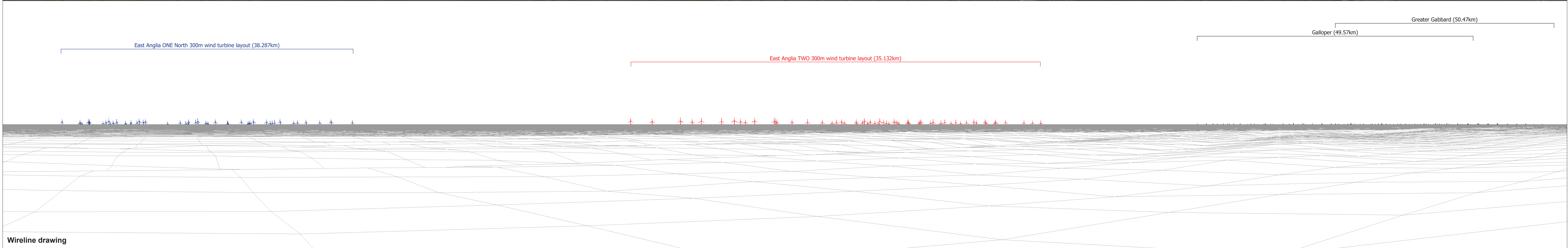
OS reference: 653618 E 285844 N	Horizontal field of view: 90° (cylindrical projection)	Camera: Canon EOS 5D Mark II
Eye level: 6.35 m AOD	Principal distance: 522 mm	Lens: 50mm (Canon EF 50mm f/1.4)
Direction of view: 35°		Camera height: 1.5 m AGL
Nearest turbine: 35.132 km		Date and time: 12/09/17, 12:04

Figure: 28.26b
Viewpoint 2: Kessingland Beach



Existing photograph

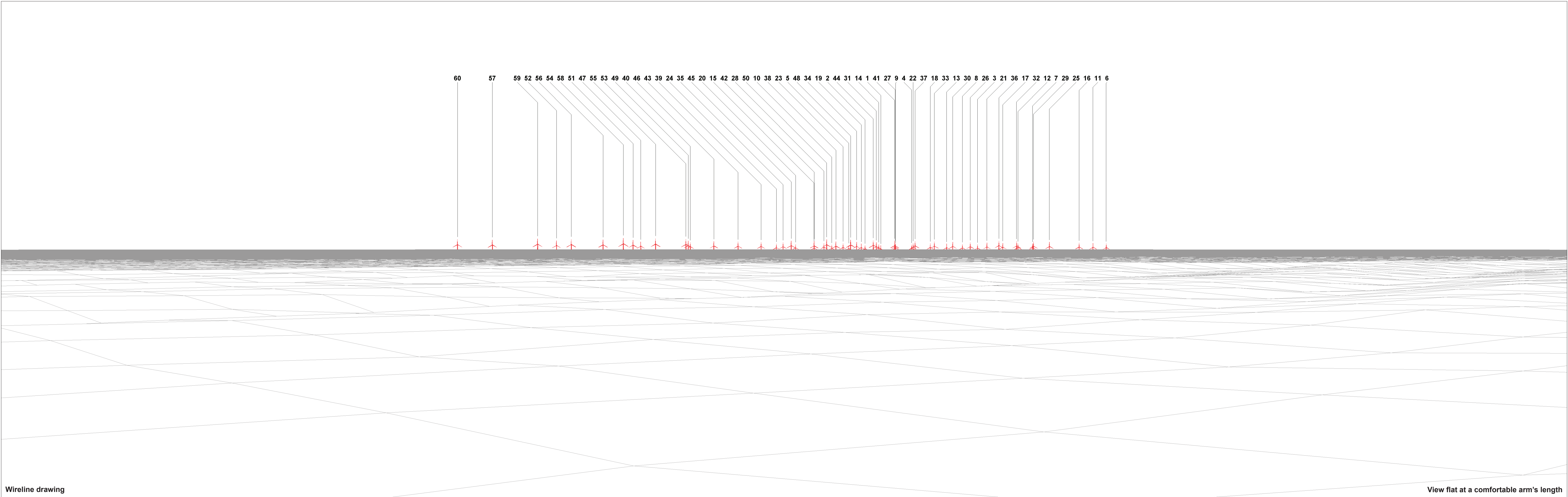
This image provides landscape and visual context only



Wireline drawing

OS reference: 653618 E 285844 N	Horizontal field of view: 90° (cylindrical projection)	Camera: Canon EOS 5D Mark II
Eye level: 6.35 m AOD	Principal distance: 522 mm	Lens: 50mm (Canon EF 50mm f/1.4)
Direction of view: 125°		Camera height: 1.5 m AGL
Nearest turbine: 35.132 km		Date and time: 12/09/17, 12:04

Figure: 28.26c
Viewpoint 2: Kessingland Beach



Wireline drawing

View flat at a comfortable arm's length

<p>OS reference: 653618 E 285844 N Eye level: 6.35 m AOD Direction of view: 128° Nearest turbine: 35.132 km</p>	<p>Horizontal field of view: 53.5° (planar projection) Principal distance: 812.5 mm Paper size: 841 x 297 mm Correct printed image size: 820 x 260 mm</p>	<p>Camera: Canon EOS 5D Mark II Lens: 50mm (Canon EF 50mm f/1.4) Camera height: 1.5 m AGL Date and time: 12/09/17, 12:04</p>	<p>Figure: 28.26d Viewpoint 2: Kessingland Beach</p>
--	--	---	---



Photomontage

View flat at a comfortable arm's length

OS reference: 653618 E 285844 N	Horizontal field of view: 53.5° (planar projection)	Camera: Canon EOS 5D Mark II	
Eye level: 6.35 m AOD	Principal distance: 812.5 mm	Lens: 50mm (Canon EF 50mm f/1.4)	
Direction of view: 128°	Paper size: 841 x 297 mm	Camera height: 1.5 m AGL	
Nearest turbine: 35.132 km	Correct printed image size: 820 x 260 mm	Date and time: 12/09/17, 12:04	Figure: 28.26e Viewpoint 2: Kessingland Beach



Photomontage (2000 candela lights) View flat at a comfortable arm's length

OS reference: 653618 E 285844 N	Horizontal field of view: 53.5° (planar projection)	Camera: Canon EOS 5D Mark II
Eye level: 6.35 m AOD	Principal distance: 812.5 mm	Lens: 50mm (Canon EF 50mm f/1.4)
Direction of view: 128°	Paper size: 841 x 297 mm	Camera height: 1.5 m AGL
Nearest turbine: 35.132 km	Correct printed image size: 820 x 260 mm	Date and time: 18/09/17, 18:51

Figure: 28.26f
Viewpoint 2: Kessingland Beach



Photomontage (200 candela lights) View flat at a comfortable arm's length

OS reference: 653618 E 285844 N	Horizontal field of view: 53.5° (planar projection)	Camera: Canon EOS 5D Mark II
Eye level: 6.35 m AOD	Principal distance: 812.5 mm	Lens: 50mm (Canon EF 50mm f/1.4)
Direction of view: 128°	Paper size: 841 x 297 mm	Camera height: 1.5 m AGL
Nearest turbine: 35.132 km	Correct printed image size: 820 x 260 mm	Date and time: 18/09/17, 18:51

Figure: 28.26g
Viewpoint 2: Kessingland Beach